

Apache Open Office

Version 4.1

Impress Guide

AOO Documentation Team

Chapter **3**

Adding and Formatting Text

Copyright

This document is Copyright © 2024 by the Apache Software Foundation®. You may distribute it and/or modify it under the terms of the Creative Commons Attribution License (<http://creativecommons.org/licenses/by/3.0/>), version 3.0 or later.

All trademarks within this guide belong to their legitimate owners.

Feedback

Please direct any comments or suggestions about this document to:
doc@openoffice.apache.org

Acknowledgments

This document is updated from a previous version by OOoAuthors.

Publication Date and Software Version

Published <date>. Based on Apache OpenOffice 4.1 .

Note for Mac Users

Some keystrokes and menu items are different on a Mac from those used in Windows and Linux. The table below gives some common substitutions for the instructions in this chapter. For a more detailed list, see the application Help.

Windows/Linux	Mac equivalent	Effect
Tools > Options menu selection	OpenOffice.org > Preferences	Access setup options
<i>Right-click</i>	<i>Control+click</i>	Open context menu
<i>Ctrl</i> (Control)	⌘ (Command)	Used with other keys
<i>F5</i>	<i>Shift+⌘+F5</i>	Open the Navigator
<i>F11</i>	⌘+T	Open Styles & Formatting window

Contents


Copyright	2
Note for Mac users	2
Introduction	5
Working with text boxes	5
Using text boxes created from the Layout pane.....	5
Using text boxes created from the text box tool.....	5
Moving a text box.....	6
Resizing a text box.....	7
Deleting a text box.....	7
Inserting text	8
Pasting text.....	8
Pasting unformatted text.....	8
Formatting pasted text.....	8
Inserting special characters.....	9
Inserting non-breaking spaces and hyphens.....	10
Introduction to formatting text	10
Selecting text.....	11
Using styles to format text	11
Modifying a presentation style.....	11
Updating a style from a selection.....	12
Applying a presentation style.....	12
Formatting characters	13
Font page.....	13
Font Effects page.....	14
Position page.....	14
Formatting paragraphs	15
Indents and Spacing page.....	16
Alignment page.....	17
Tabs page.....	18
Asian Typography page.....	18
Creating bulleted and numbered lists	19
Creating lists in AutoLayout text boxes.....	19
Creating lists in other text boxes.....	19
Creating a new outline level.....	20
Changing the appearance of the list	20
Selecting the entries.....	20
Position page.....	21
Customize page.....	22
Changing the order or the outline level lines.....	24
Using tables	24
Creating a table.....	25
Modifying a table.....	26

Task pane options.....	26
Table toolbar.....	26
Table properties.....	29
Position and size.....	30
Deleting a table.....	30
Using fields.....	30
Inserting a field.....	30
Customizing fields.....	30
Using hyperlinks.....	31
Editing text hyperlinks.....	33
Working with hyperlink buttons.....	33

Introduction

This chapter describes how to add text to slides and format the text. Text in slides is contained in *text boxes*.

There are two ways to add text boxes to a slide:

- Choose a predefined layout from the *Layouts* panel of the Properties deck of the Sidebar, containing text elements as described in Chapter 1. These text boxes are called **AutoLayout** text boxes.
- Create a text box using the text tool  in the Drawing toolbar.

This chapter describes how to create, modify, use, and delete text boxes. It also discusses the various types of text that can be inserted, and explains how to format the text. Finally, it provides information on how to insert special forms of text such as numbered or bulleted lists, tables, fields and hyperlinks.

Working with Text Boxes

Using Text Boxes Created from the Layout Panel


In Normal view:

- 1) Click in the text box that reads *Click to add text*.
- 2) Type or paste your text in the text box.

These text boxes are known as AutoLayout text boxes. See also “Creating Bulleted and Numbered Lists” on page 19.


Using Text Boxes Created from the Text Box Tool

In Normal View:

- 1) Click on the **Text** icon  on the Drawing toolbar. If the toolbar with the text icon is not visible, choose **View > Toolbars > Drawing**.
- 2) Click and drag to draw a text box on the slide. This sets the width. Do not worry about the height—the text box will expand if needed as you type. To reposition the text box to a different part of the slide, see “Moving a Text Box” on page 6; to change the width, see “Resizing a Text Box” on page 7.
- 3) Release the mouse button when finished. The cursor appears in the text box, which is now in edit mode (gray hashed border; see Figure 1).
- 4) Type or paste your text in the text box.
- 5) Click outside the text box to deselect it.

Note

In addition to boxes where text is horizontally aligned, it is possible to insert text boxes where the text is aligned vertically. This choice is available only when Asian languages are enabled in **Tools > Options > Language Settings > Languages**.

Click on the  icon in the drawing toolbar to create a vertical text box. Note that when editing the contents, the text is displayed horizontally.

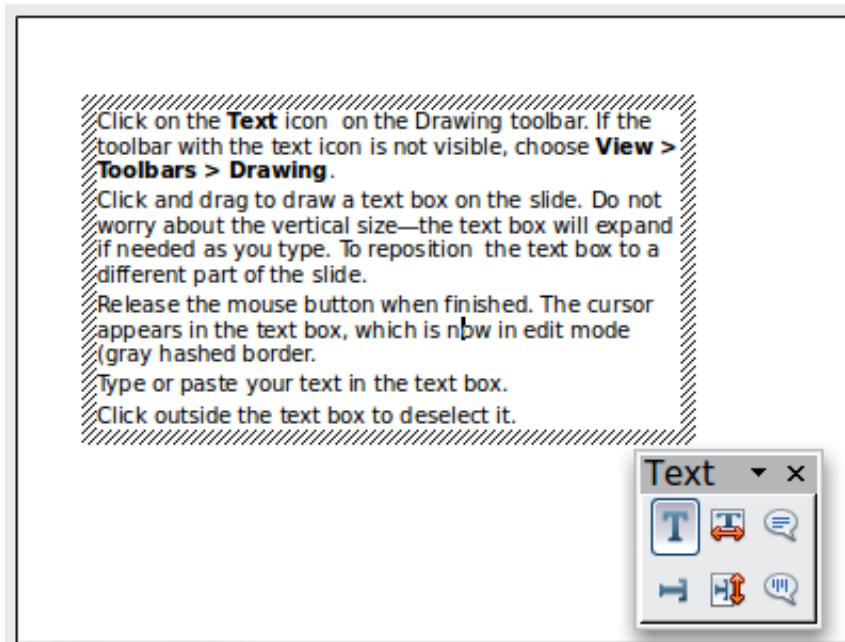


Figure 1: Selected text box and text toolbar

Moving a Text Box

In Normal view, notice how the pointer changes from an arrow to an I-beam as you move it over the text in a text box.

- 1) Click when the pointer becomes an I-beam. The text box is now in edit mode. In this mode a gray border is visible around the text box edges.
- 2) Move the I-beam (or pointer) over the gray border. Notice how it changes shape, becoming the usual “move” symbol (for example, a hand).
- 3) When the “move” symbol appears, click once. Blue selection handles appear.
- 4) Click anywhere in the text box or on the gray border (except for the blue handles) and drag to move the text box. A semi-transparent copy of the text box shows where your text box will be placed. See Figure 2.
- 5) Release the mouse button when the text box is in the desired position. To return to edit mode, click outside the text box area and then repeat step 1) of this procedure.

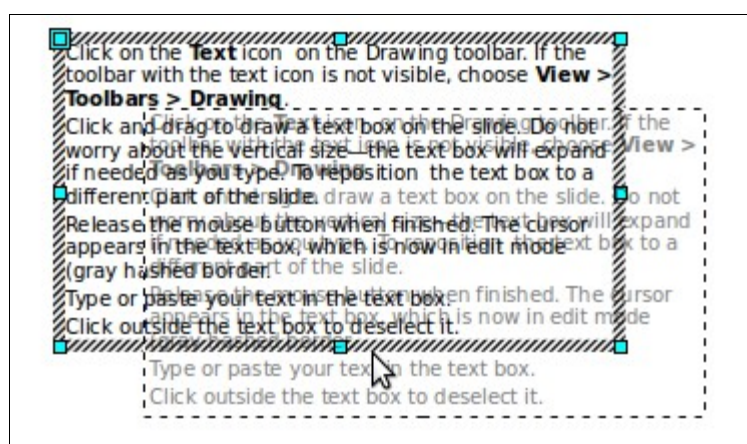


Figure 2: Moving a text box

Resizing a Text Box

In Normal view, enter edit mode by clicking on the text box. Then move the mouse to the gray edge of the text box. When the cursor shape changes, click the left mouse button again. The text box should now display blue resizing handles. Move the pointer over any handle. Notice how the pointer changes shape, indicating in what direction the text box will be resized. The corner handles change the two dimensions of the text area simultaneously, while the four handles at the center of each side modify only one dimension.

When the two-headed arrow is displayed, click and drag to resize the text box.

Tip

To maintain the proportions of a text box while resizing, press and hold the *Shift* key, then click and drag. Make sure to release the mouse button **before** releasing the *Shift* key.

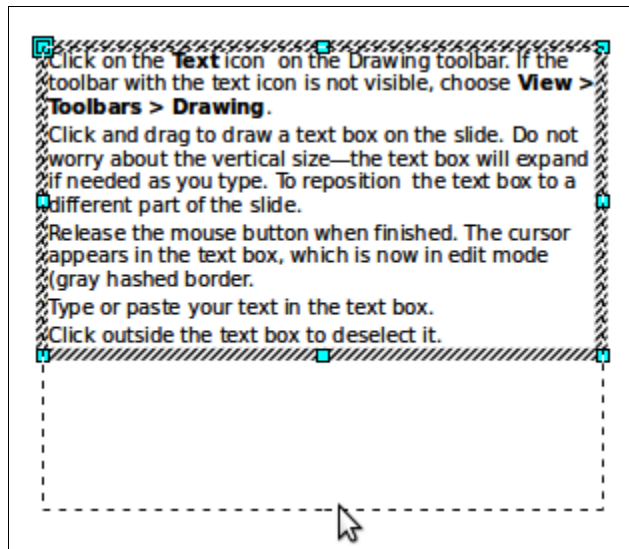


Figure 3: Resizing a text box

Impress also provides a different type of text box which resizes horizontally to automatically fit the text as it is inserted. To insert an auto-resizing text box, click on the **T** icon in the text toolbar (see Figure 1) and then click on the place in the slide where you want the first letter of the text to appear. If the text toolbar is not visible, choose **View > Toolbars > Text**.

For more accurate control over the shape, size and position of the text box, instead of using the mouse, use the Position and Size dialog box. Select the text box, then press *F4* or select **Format > Position and Size** from the menu bar. The use of this dialog box is explained in Chapter 2.

Deleting a Text Box

- 1) Click the text once to display the gray border.
- 2) Move the cursor to the edge of the text box and click the left mouse button. The gray border now shows blue selection handles.
- 3) Press *Delete*.

Tip

Sometimes it is faster to delete a text box by dragging a selection rectangle around the text box and then hitting the Delete key. Take care to avoid selecting and accidentally deleting other text boxes or shapes.

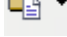
Inserting Text

Pasting Text

Text may be inserted into the text box by copying it from another document and pasting it into Impress. However, the pasted text will probably not match the formatting of the surrounding text, or that of the other slides in the presentation. While this may be what you want on some occasions, in most cases you want to ensure the presentation style is consistent. There are several ways to ensure consistency; they're explained below.

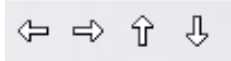
Pasting Unformatted Text

It is normally good practice to paste text without formatting and apply the formatting later. To paste without formatting, either press *Control+Shift+V* and then select **Unformatted text** from the dialog box that appears, or click on the small black

triangle next to the paste symbol in the standard toolbar  and select **Unformatted text**. The unformatted text will be formatted with the outline style at the cursor position in an AutoLayout text box or with the default graphic style in a normal text box.

Formatting Pasted Text

If pasting the text into an **AutoLayout** area, and then to give the pasted text the same look and feel of the rest of the presentation, apply the appropriate *outline style* to the text.

- 1) Paste the text in the desired position. Do not worry if it does not look right: it will in a minute.
- 2) Select the text you have just pasted (see “Selecting Text” on page 11 for details on how to do that).
- 3) Select **Format > Default formatting** from the menu bar. This operation will assign one of the nine Presentation styles to the text (depending on where the insertion is made).
- 4) Use the four arrow buttons in the Text Formatting toolbar  to move the text to the appropriate position and give it the appropriate outline level. The button with the arrow pointing left promotes the list entry by one level (for example from Outline 3 to Outline 2), the right arrow button demotes the list entry by one level, the up and down arrow buttons move the list entry.
- 5) Apply manual formatting as required to sections of the text (to change font attributes, tabs, and so on).

If you are pasting text into a **text box**, you can still use styles to quickly format the text. Note that only one graphic style can be applied to copied text.

- 1) Paste the text in the desired position.
- 2) Select the text you have just pasted (see “Selecting Text” on page 11 for details).

- 3) Select the desired graphic style.
- 4) Apply manual formatting as required to sections of the text.


Tip

Presentation styles are very different from Writer styles and are applied in quite a different way. Refer to "Using Styles to Format Text" on page 11 for details.

Inserting Special Characters

To insert special characters, such as copyright, math, geometric, or monetary symbols, or characters from another language:

- 1) Click in the place in the text where you want to insert the character.
- 2) Choose **Insert > Special Character**. The Special Characters dialog box

appears (Figure 4). Alternatively if the  icon is visible on the Formatting toolbar, you can click this to bring up the Special Characters dialog box.

Tip

To show toolbar buttons that are not visible, click on the small down-arrow on the right end of the tool bar, move the cursor over **Visible Buttons** and then click on the icon you wish to make visible.

- 3) Choose the font and character subset from the *Font* and *Subset* drop-down menus.
- 4) Click the character you want to insert. You may have to scroll to find the one you want.
- 5) Click **OK**.

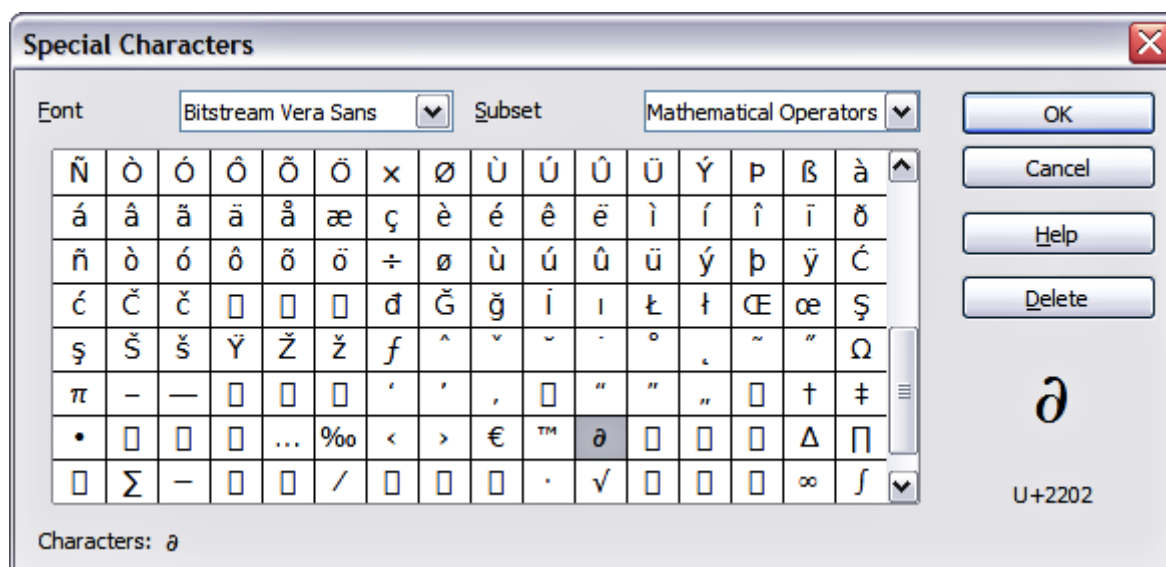


Figure 4: Insert special characters dialog box

Characters you select will be inserted in the order they were selected. If you accidentally click the wrong character, clicking another character will only add it to the ones being inserted. Click **Delete** (all the characters selected will be deleted), then click the correct characters. Alternatively, you can also simply insert all selected characters and delete any unwanted ones; special characters behave like any other character.

Inserting Non-breaking Spaces and Hyphens

Where it is not desirable for words separated by a space or by a hyphen to span over two lines, or where an optional hyphen is desired, you can insert a special formatting mark.

To access the Formatting marks options, select from the menu bar **Insert > Formatting marks**. Impress supports three formatting marks:

- **Non-breaking space:** A non-breaking space between two words prevents these two words being separated over two lines. Press *Control+Shift+Spacebar* on the keyboard to insert a non-breaking space.
- **Non-breaking hyphen:** A non-breaking hyphen keeps the two words separated by the hyphen on the same line.
- **Optional hyphen:** An invisible hyphen that is activated (thus breaking the word) only when the word is too long to fit on one line.

Introduction to Formatting Text

The appropriate use of text formatting can give a presentation a consistent look and a dynamic feel, and it can even enhance the audience's understanding of your message by preventing distracting elements.

When you enter text, either in an AutoLayout text box or in a normal text box, it is formatted with a set of predefined attributes known as a style. The style used depends on the outline level of the point where the text was entered for AutoLayout text boxes (for example, if you are entering a level 2 item, Impress will format it according to the Outline 2 presentation style) or the Default Graphic style for text boxes.

Tip

Sometimes, as seen also in the "Pasting Text" section on page 8, it is very useful to re-apply the baseline style to a selection of text, thus eliminating any manual formatting applied to it (particularly if you made a mistake and you do not know how to undo it). To do this, select the manually formatted text, and then select **Format > Default formatting** from the menu bar.

Formatting text may require some intervention in three areas:

- The character attributes (for example the font color)
- The paragraph attributes (for example the alignment)
- The list attributes (for example the type of bullet)

In some cases it is quicker and more efficient to apply manual formatting; but in situations where you need to perform the same modifications to many different parts of a presentation, the use of styles is recommended. Both these techniques are described here.

Note

Unlike in Writer, where it is recommended to try to use styles whenever possible, in Impress manual formatting needs to be used more often. This is because presentation styles are fixed; therefore it is not possible, for example, to have two different level 1's or different types of bullet points for the same outline level.

Also, the lack of support for character styles forces the use of manual formatting to modify sections of the text.

Selecting Text

Text must be selected before it can be formatted.

- To format *all* the text in a text box, click once on the text, then click once on the border of the text box. The green resizing handles are displayed. Now any formatting changes will apply to all the text in the text box.
- To format only *part* of the text, click once on the text, then select the text to be formatted by clicking and dragging (highlighting) over it. You can also use keyboard combinations to select text: move the cursor where you want to begin your selection, press *Shift* and then use the arrow buttons to extend your selection. Formatting changes will apply only to the selected text.

Tip

To select text word by word, instead of by character, press the *Control* key and *Shift* key together. To speed up the selection even further, you can combine the *Shift* key with the *Home* key or the *End* key to extend the selection up to the start or end of the line in which the cursor is positioned, respectively.


Using Styles to Format Text

Impress has two categories of styles: presentation styles and graphics styles. Presentation styles are used on text inserted into an AutoLayout area, slide master backgrounds, and background objects. However, for text inserted in a text box or a graphic object, you need to apply a graphic style.

In this chapter we focus mostly on Presentation styles. For information on graphic styles, see Chapter 6 (Formatting Graphic Objects).

Modifying a Presentation Style

To modify a presentation style, follow these steps:

- 1) Open the Styles and Formatting deck of the Sidebar or open the same tool as a window by pressing *F11* or selecting **Format > Styles and Formatting** from the menu bar.
- 2) Select the style category by clicking on the Presentation Styles icon  at the top of the Style and Formatting window.
- 3) Right-click on the style to be modified and select **Modify** from the pop-up menu.

The top portion of the dialog box for a presentation style is shown in Figure 5.

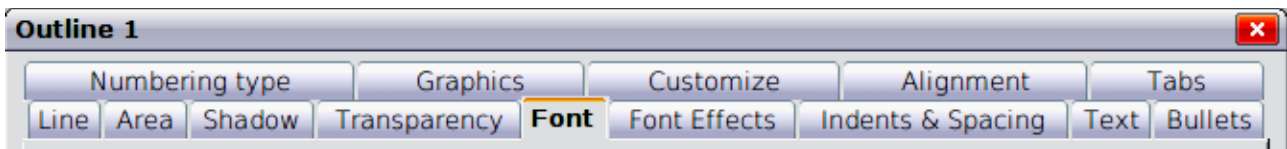


Figure 5: The dialog box for a presentation style

This dialog box consists of 14 pages, which can be divided in two groups: those that determine the formatting of the text and those that determine the properties of the slide master background and the background objects.

There is no difference between the parameters that characterize a style and the attributes given manually to portions of text; in fact the pages that open when applying formatting manually are the same that you configure in the style dialog box. Therefore once you master the formatting of text, you will know how to create and modify a style. In particular:

- For the *Font* and *Font Effects* style tabs, refer to “Formatting Characters” on page 13.
- For the *Indents and Spacing*, *Alignment*, and *Tabs* style tabs, refer to “Formatting Paragraphs” on page 15.
- For the *Bullet and numbering type*, *Graphics*, *Customize* style tabs, refer to “Creating Bulleted and Numbered Lists” on page 19.

The other tabs of the Presentation Style dialog box are all related to formatting the background and background objects and are described in detail in Chapter 6.

Updating a Style from a Selection

To update a style from a selection:

- 1) Select an item that has the format you want to adopt as a style.
- 2) In the Styles and Formatting window, select the style you want to update, and then click the **Update Style** icon (see Figure 6).

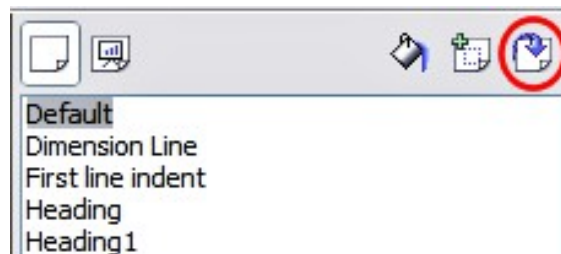



Figure 6. Updating a style from a selection

Applying a Presentation Style

To apply a presentation style, move the paragraph to the appropriate outline level as described in “Changing the Order or the Outline Level Lines” on page 24. This is different from Writer, where you select the desired style from the Styles and Formatting window.

Formatting Characters

To view the character formatting options, select **Format > Character** or click the **Character** button  on the Text Formatting toolbar. (If a toolbar with the text icon is not visible, choose **View > Toolbars > Text Formatting**.) The Character dialog box appears. Note that character *styles* do not exist in Impress.

Font Tab

Use the *Font* tab to select the desired font type, its base attributes (Italic, Bold, etc.) as well as the size. A sample of the font is displayed in the lower part of the dialog box. You can also specify the language of this text.

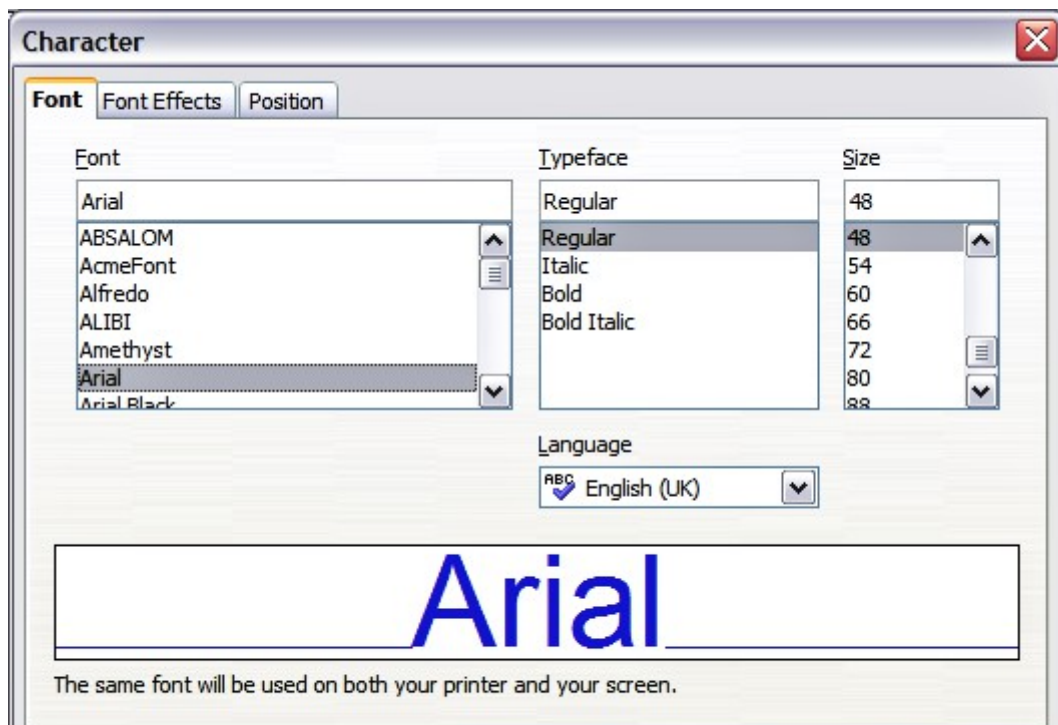



Figure 7: The dialog box to set the basic font attributes

Tip

When writing a presentation in multiple languages, you can make the best of the language setting by creating two styles that differ only in language, but are otherwise the same. This allows you to check spelling of all of the contents without affecting the appearance. 

This tab is available when creating or modifying a presentation style or a graphics style.

If Asian language support has been enabled (**Tools > Options > Language Settings > Languages**), the *Font* page looks like Figure 8.

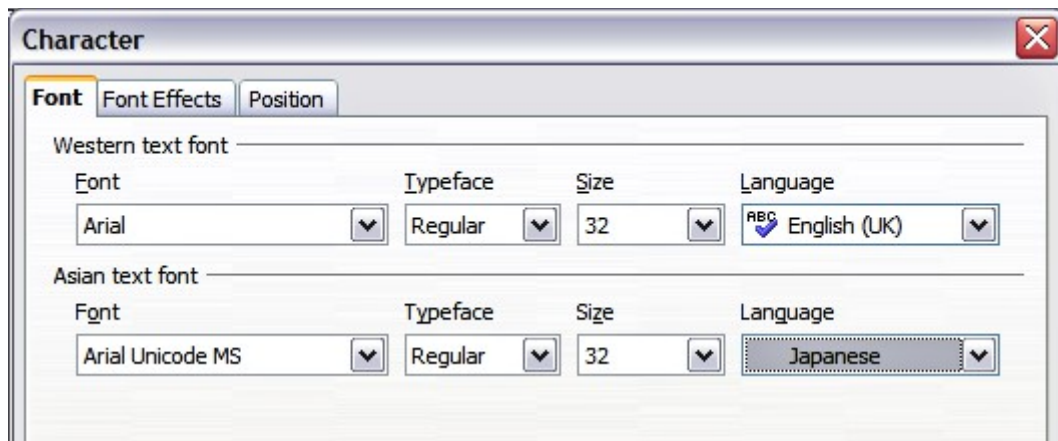


Figure 8: The Font page when Asian language support is enabled

Font Effects Tab

Use the *Font Effects* tab to apply special effects to the text, such as overlining and underlining, color, shadow and so on. As for the *Font* page, a sample of the text is displayed in the lower part of the dialog box allowing a quick visual check of the effects applied. This tab is available when creating or modifying a presentation style or a graphics style.

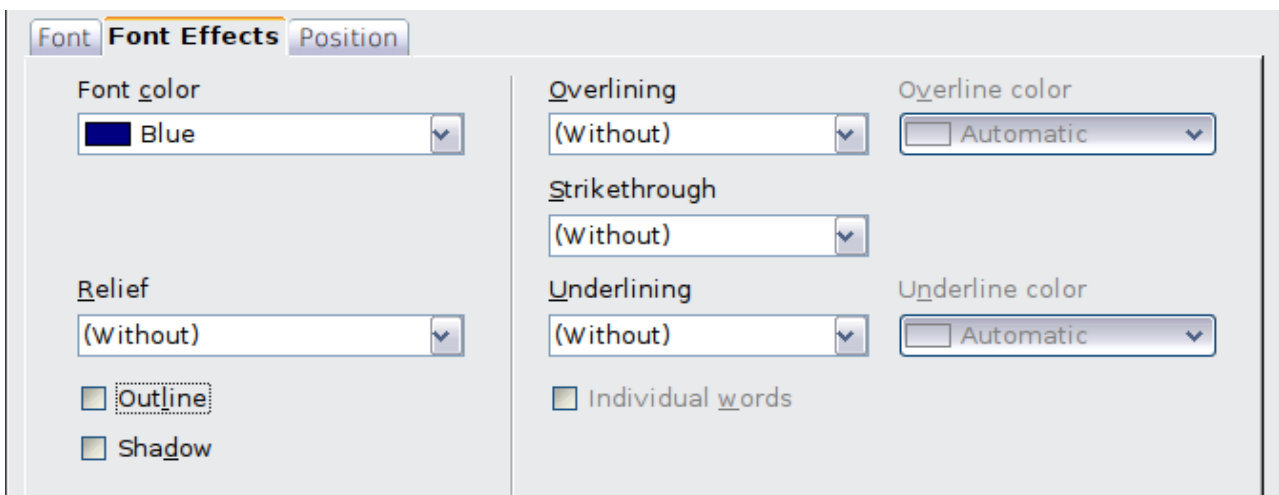


Figure 9: Advanced options for the character can be set in the Font Effects page

Position Tab

The *Position* tab has advanced options to customize text. This page is not available when creating or modifying a presentation style or a graphics style.

Use this tab to set the text position relative to the baseline when you need to insert subscripts or superscripts.

To create a superscript or a subscript do the following:

- 1) Select Superscript or Subscript as applicable.
- 2) Specify the amount by which the text should be raised (superscripts) or lowered (subscripts).
- 3) Specify the dimensions of the character relative to the baseline character size (in percentage).

The amount by which the text is raised or lowered can be set to automatic by selecting **Automatic**.

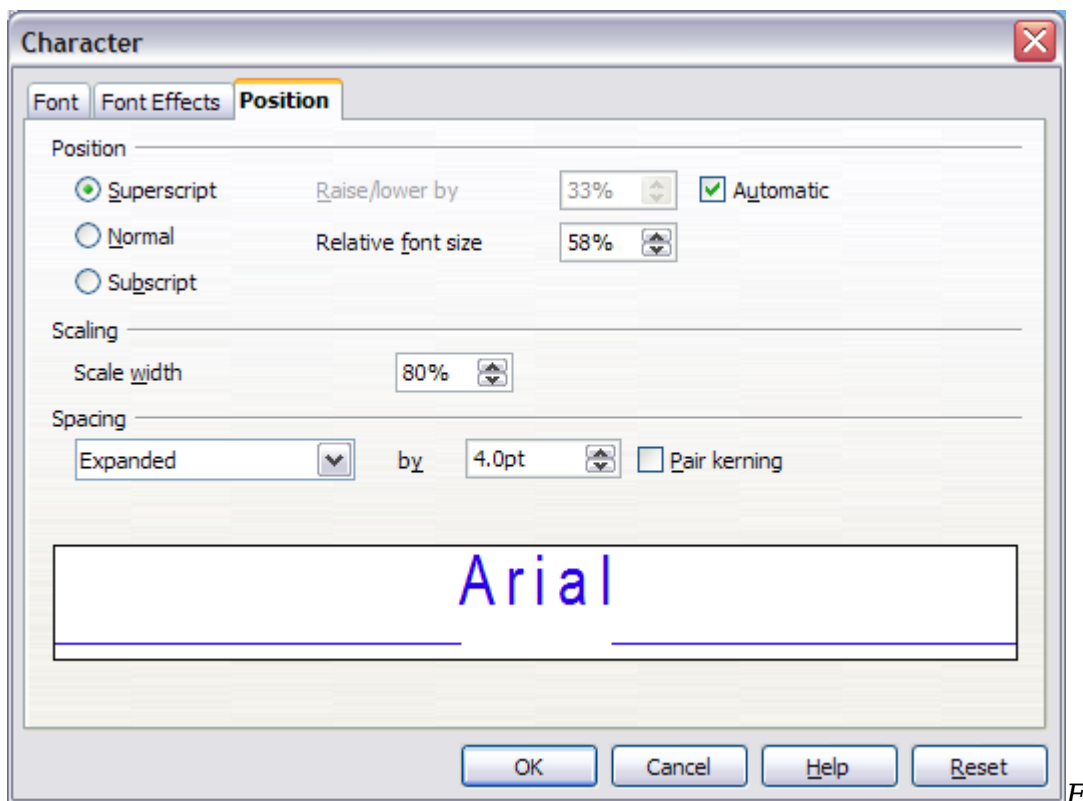



Figure 10: Setting the character position attributes

Two more position attributes can be set on this page:

- The (width) scaling of the text, which specifies the percentage of the font width by which to compress or expand the *individual* characters of the selected text.
- The spacing between the characters of the font, which can be defined in number of points. Selecting the **Pair kerning** checkbox causes AOO to automatically adjust the spacing between certain pairs of characters to visually improve the appearance. For example, when writing a V followed by an A (VA) the spacing between the two letters is reduced (strong kerning) as can be easily seen when compared with, say, VS which is not a kerning pair.

Formatting Paragraphs

To view the paragraph formatting options, select **Format > Paragraph** or click the

Paragraph button  on the Text Formatting toolbar. If a toolbar with the text icon is not visible, choose **View > Toolbars > Text Formatting**. The Paragraph dialog box is shown. It contains three pages that are described in detail below. If Asian language support has been activated, a page called Asian Typography is also displayed.

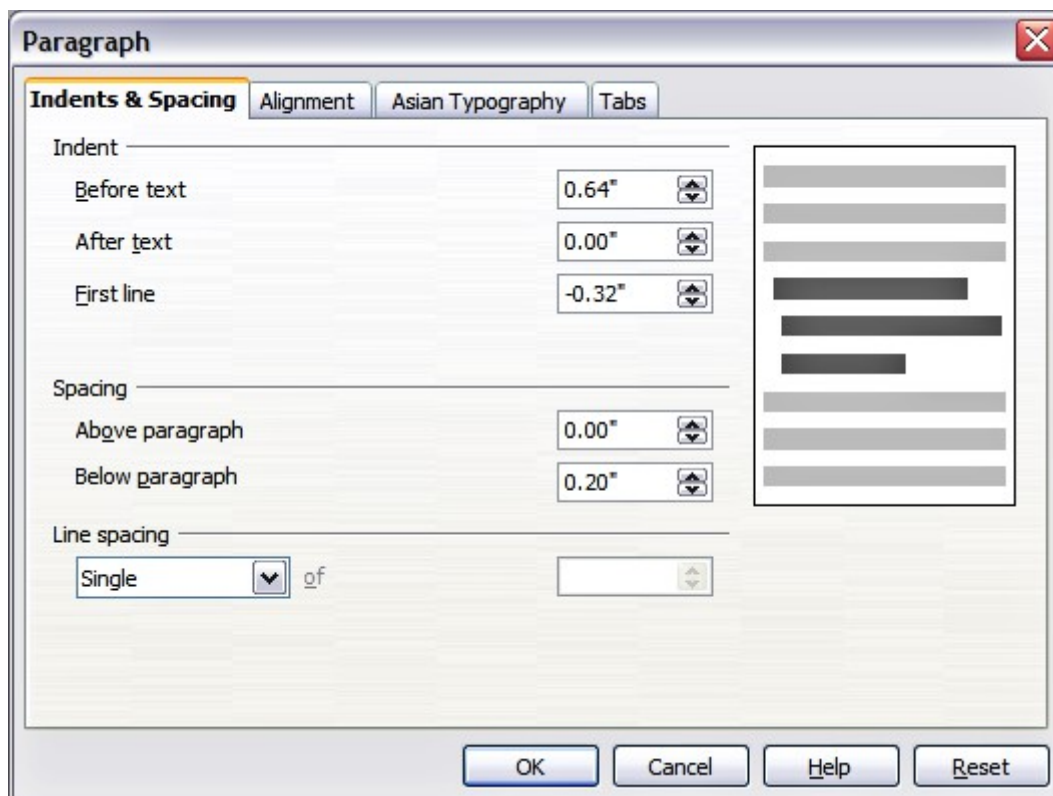


Figure 11: The paragraph formatting dialog box

Indents and Spacing Tab

The *Indents and Spacing* tab, shown in Figure 12, has four sections:

- **Indent:** modifies the indentation of the text (before and after) as well as the indentation of the first line.
- **Spacing:** defines the space before and after each paragraph formatted with the style.

Tip You can change the default unit of measurement, for example from inches to centimeters, from **Tools > Options > OpenOffice Impress > General**.

- **Line spacing:** determines the spacing between two lines formatted with the style. Note that selecting *Proportional* spacing requires specifying the percentage of a line to be used as spacing; 100% corresponds to a single line, 200% to a double line, 50% to half a line. If *Leading* is selected, specify the amount of line spacing in your default unit of measurement.

Tip Setting the line spacing to less than 100% is a good method to cram a lot of text into a text box. However, care must be taken, as too small a value will make the text hard to read.

- **Preview area:** provides a visual representation of the settings before you apply them.

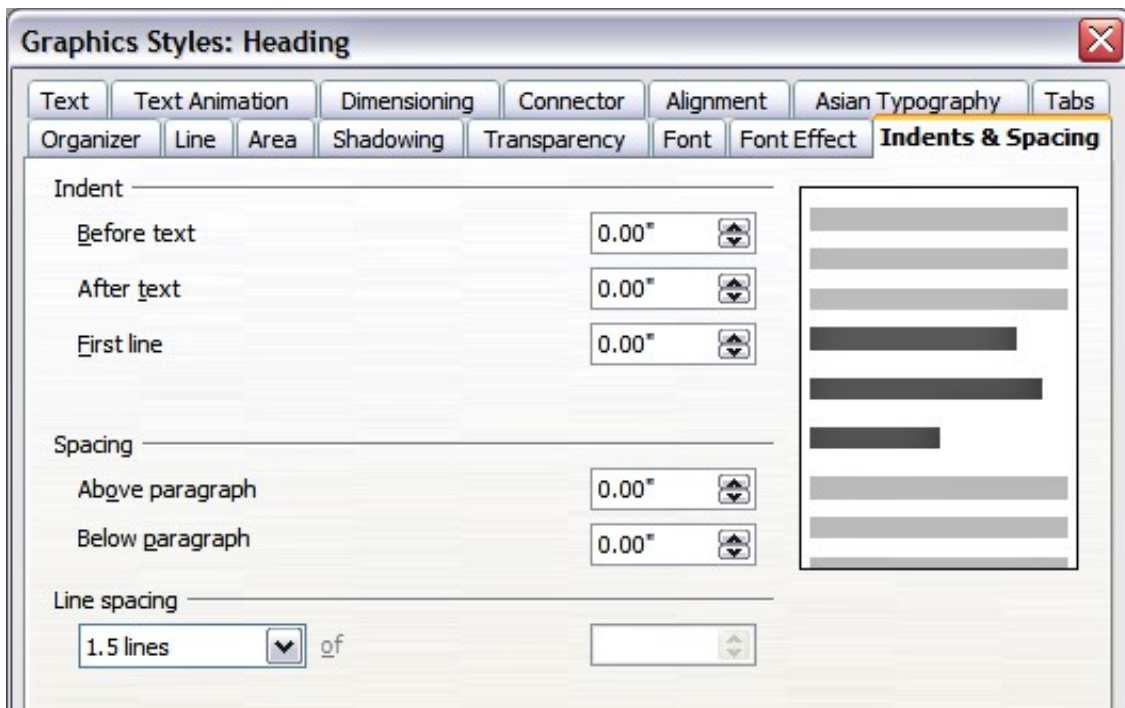


Figure 12: Indent and Spacing settings for the selected paragraph or style

The Indents and Spacing page is also available when creating or modifying a graphics style or when modifying a presentation style.

Alignment Tab

Use the *Alignment* page to determine the text alignment: Left, Right, Center, or Justified. A preview shows the effects of the changes.

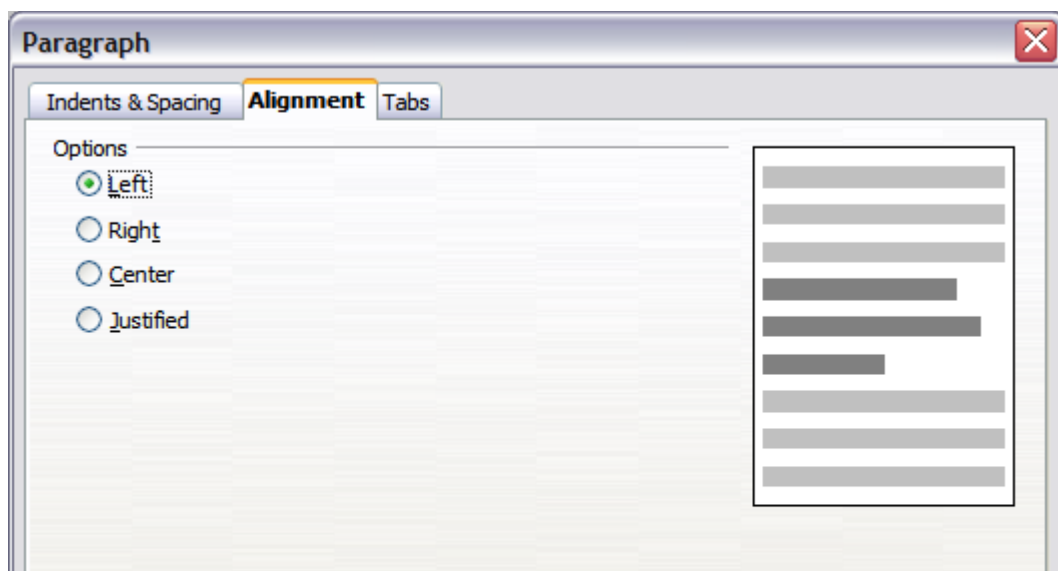


Figure 13: Alignment tab of paragraph style

The same choices can be accessed from the Text Formatting toolbar.



This tab is also available when creating or modifying a graphics style, or modifying a presentation style.

Tabs Tab

Use the *Tabs* tab to set tab stops. To delete an existing tab stop, select it in the list and click the **Delete** button. To delete all the tab stops, click the **Delete All** button.

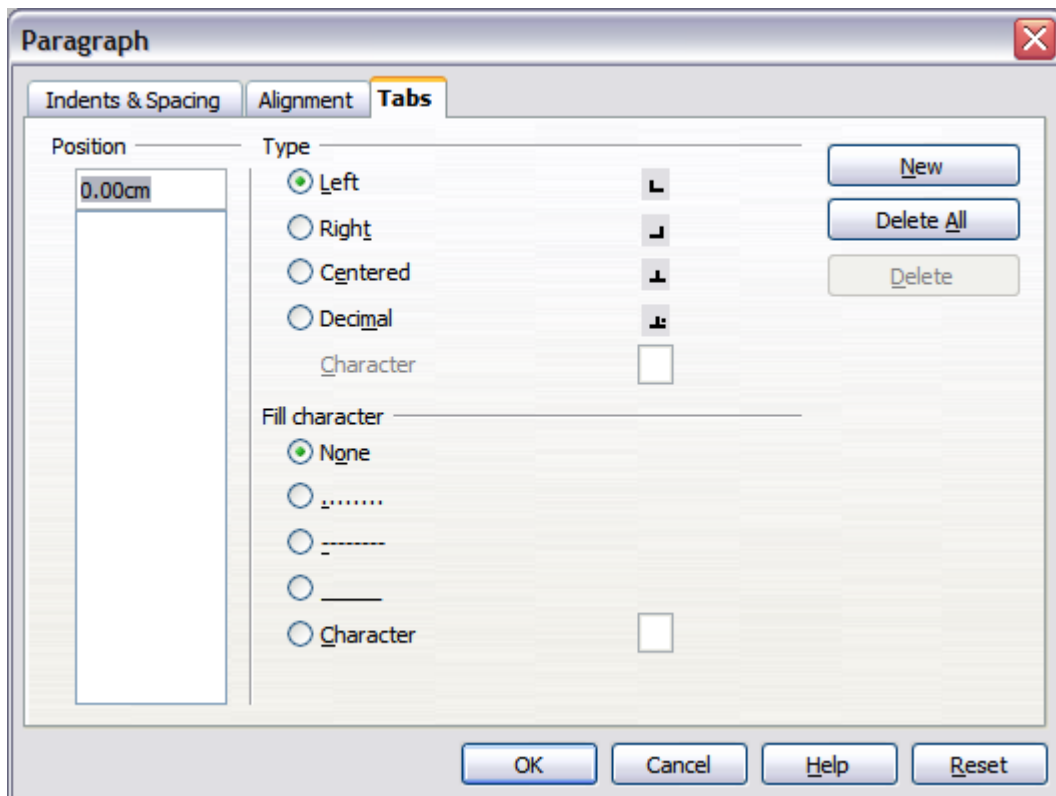


Figure 14: Tabs page in a paragraph

To create a new tab stop:

- 1) Set the size of the tab stop in the edit box on the left.
- 2) Select the type. If you set the type to *Decimal*, specify in the box below the character to be regarded as the decimal point.
- 3) Select a fill character which will be drawn from the tab insertion point up to the tab stop. You can choose any character to act as fill character.
- 4) Click the **New** button to apply the new tab stop.

This tab is available in the **Format > Paragraph** dialog box (see Figure 12) and in the Graphics Styles dialog box.

Asian Typography Tab

Use the *Asian Typography* page, shown in Figure 15, to set the following properties relative to line changes:

- Apply list of forbidden characters to the beginning and end of lines
- Allow hanging punctuation
- Apply spacing between Asian, Latin and Complex text

The use of these options is self-explanatory.

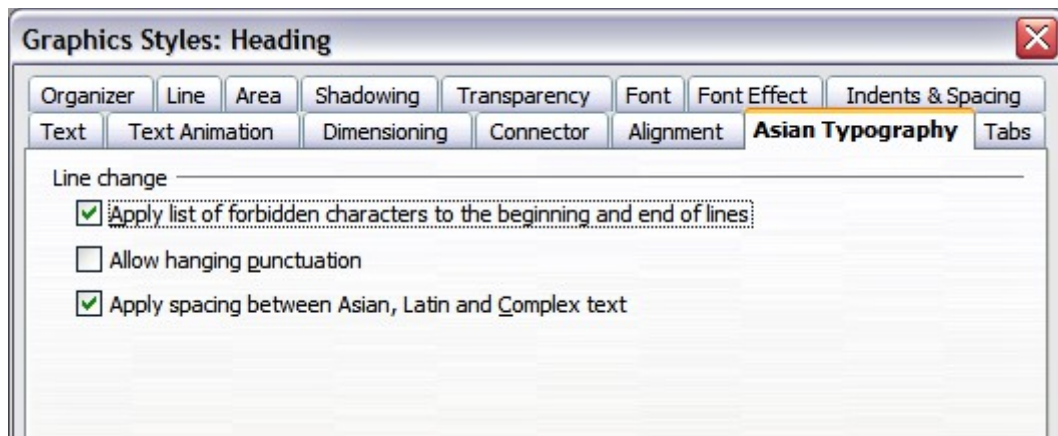


Figure 15: The Asian Typography page

Creating Bulleted and Numbered Lists

The procedure to create a bulleted or numbered list varies depending on the type of text box used, although the tools to manage the list and customize the appearance are the same.

In text boxes created automatically by Impress (called AutoLayout), the outline styles available are by default bulleted lists, while for normal text boxes an additional step is required to create a bulleted list.

Creating Lists in AutoLayout Text Boxes

Every text box included in the available layouts is already formatted as a bulleted list, therefore to create a bulleted list the only necessary steps are:

- 1) From the Layout deck, choose a slide design that contains a text box. Those are easily recognizable from the thumbnail.
- 2) Click in the text box that reads **Click to add an outline**.
- 3) Type the text, then press *Enter* to start a new bulleted line.

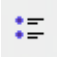
The default list type is a bulleted list. To customize the list appearance or to change from bulleted to numbered and vice versa, refer to “Changing the Appearance of the List ” on page 20.

Tip

Press *Shift+Enter* to start a new line without creating a new bullet or number. The new line will have the same indentation as the previous line. Click the bullets icon on/off on the text formatting toolbar for a line without bullet. If the text formatting toolbar is not showing, enable it by selecting **View > Toolbar > Formatting** in the menu bar.

Creating Lists in Other Text Boxes

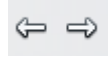
To create a list in a text box, follow these steps:

- 1) Place the cursor in the text box.
- 2) Click the **Bullets On/Off** button  in the text formatting toolbar.
- 3) Type the text and press *Enter* to start a new bulleted line.

The way to change the appearance of a list is explained on page 20.

Creating a New Outline Level

- 1) If necessary, press *Enter* to begin a new line.
- 2) Press *Tab* or click the indentation arrows in the Text Formatting toolbar. Each time you press *Tab* or click the right arrow, the line indents to the next outline level. Pressing *Enter* creates a new line at the same level as the previous one. To return to the previous level, press *Shift+Tab* or click the left arrow.



In the AutoLayout text boxes, promoting or demoting an item in the list corresponds to applying a different outline style, so the second outline level corresponds to Outline 2 style, the third to Outline 3 style and so on. As a consequence, a change in the level also produces other changes (for example font size, bullet type, and so on).


Caution



Do not try to change outline level by selecting text and then clicking the desired outline style, as you would in Writer. Due to the way presentation styles work, it's not possible to apply them in Writer fashion.


Changing the Appearance of the List

You can fully customize the appearance of a list, changing the bullet type or numbering for the entire list or for single entry. All the changes can be made using the Bullets and Numbering dialog box, which is accessed by selecting **Format >**

Bullets and Numbering or by clicking on the **Bullets and Numbering** icon  on the text formatting toolbar.

Selecting the Entries

For the entire list:

- 1) Select the entire list or click on the gray border of the text box so that just the green resizing handles are displayed.
- 2) Select **Format > Bullets and Numbering** or click on the **Bullets and Numbering** icon .
- 3) The Bullets and Numbering dialog box (Figure 16) contains five tabs: Bullets, Numbering type, Graphics, Position, and Customize.
 - If a bulleted list is needed, select the desired bullet style from the six default styles available on the *Bullets* page.
 - If a graphics style is needed, select one from those available on the *Graphics* page.
 - If a numbered list is needed, select one of the 6 default numbering styles on the *Numbering type* page.

Later in this section is an explanation on how to add further bullets and numbering styles to the existing ones.

For a single line in the list:

- 1) Click anywhere in the line to place the cursor in it.
- 2) Follow steps 2 and 3 of the previous instruction set.

If the list was created in an AutoLayout text box, then another way to change the entire list is to modify the Outline styles. Changes made to the outline style will apply

to all the slides using them, so be careful before using this command. The tabs related to list management are described below.

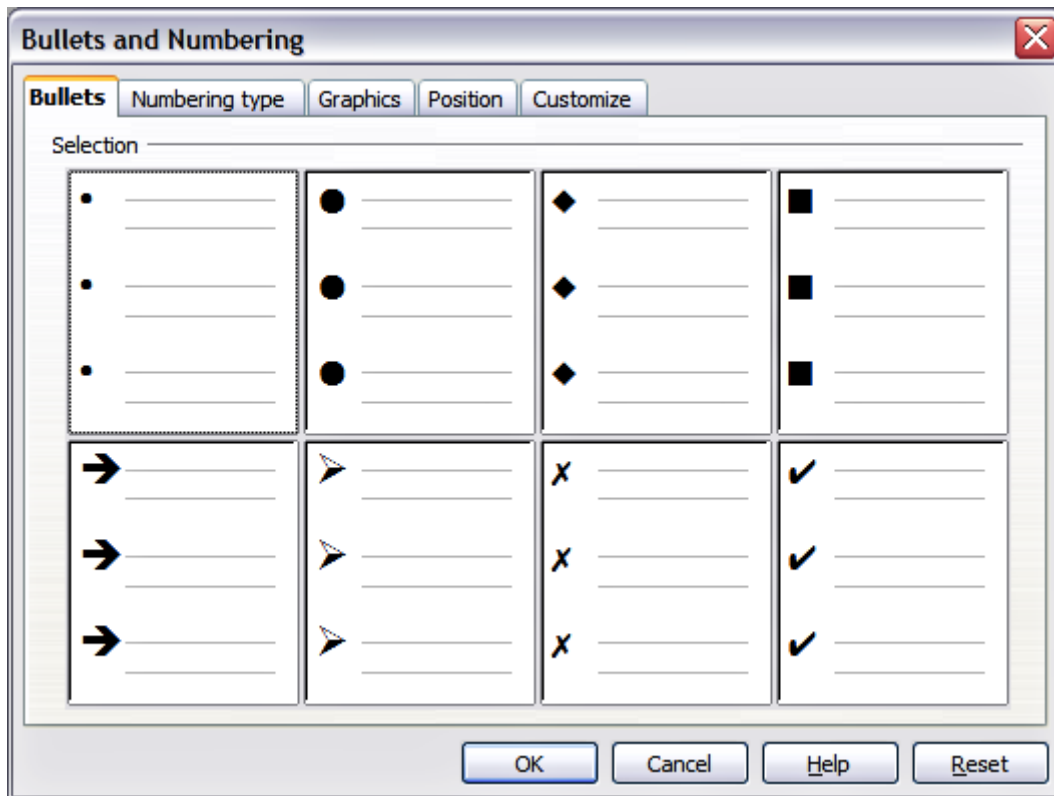


Figure 16: The Bullets and Numbering dialog box

Position Tab

Use the *Position* tab, shown in Figure 17, to fine-tune the indentation and spacing of the bullet point and its text. This page is particularly effective when used in combination with the *Customize* page.

To set up an outline level, first select it from the list on the left hand side of the page. Select level **1 - 10** to modify all the levels simultaneously. Then set the *Indent*, which is the spacing between the bullet or number and the text. If you select the **Relative** option, the indent value will be measured relative to the previous level and not from the margin.

The numbering alignment is only useful when creating a numbered list; use it to specify the alignment of the numbers. For example, you may want to align them to the right to line up one- and two-digit numbers in a pleasing way.

Tip

To appreciate fully how the numbering alignment works, create a numbered list with more than 10 elements. Then, make sure that enough room has been made for a two (or more) digit number using the *Width of numbering* field.

The *Position* page is not available if you are modifying a presentation style or graphics style; however the same effects can be obtained by using the *Indents and Spacing* page of the dialog box for creating or modifying a slide (see Figure 12).

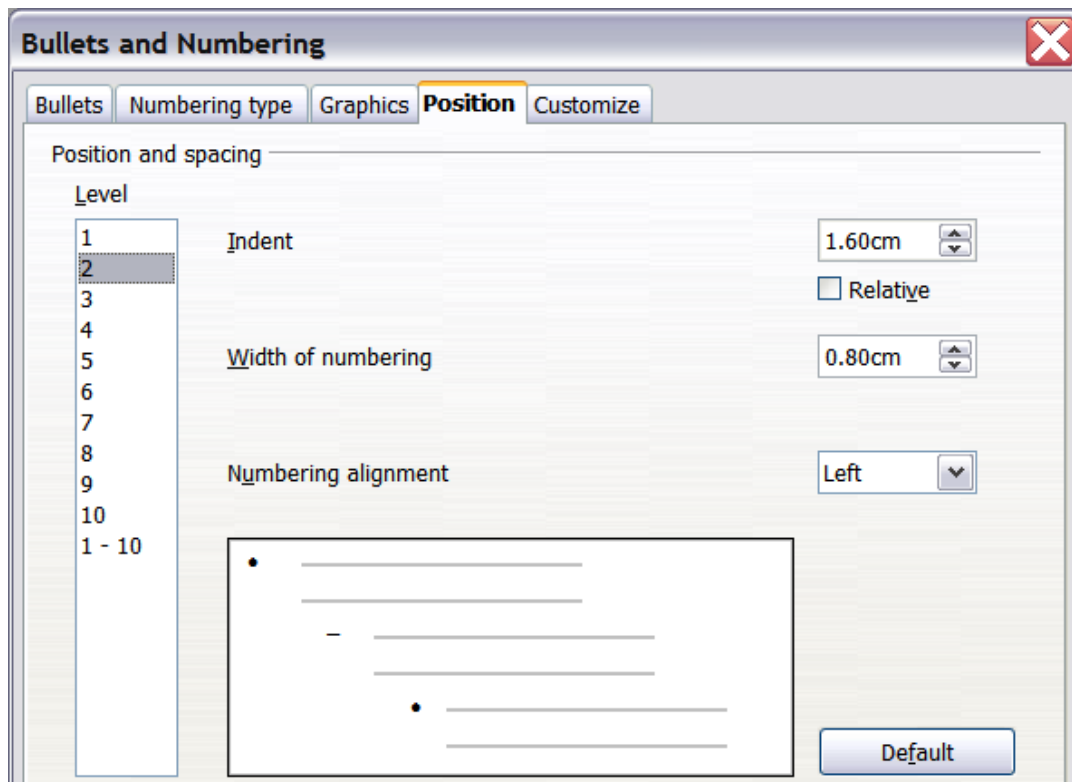


Figure 17: The Position tab used to set list indentation

Customize Tab

Use the *Customize* tab, shown in Figure 18, to alter the style of all the outline levels.

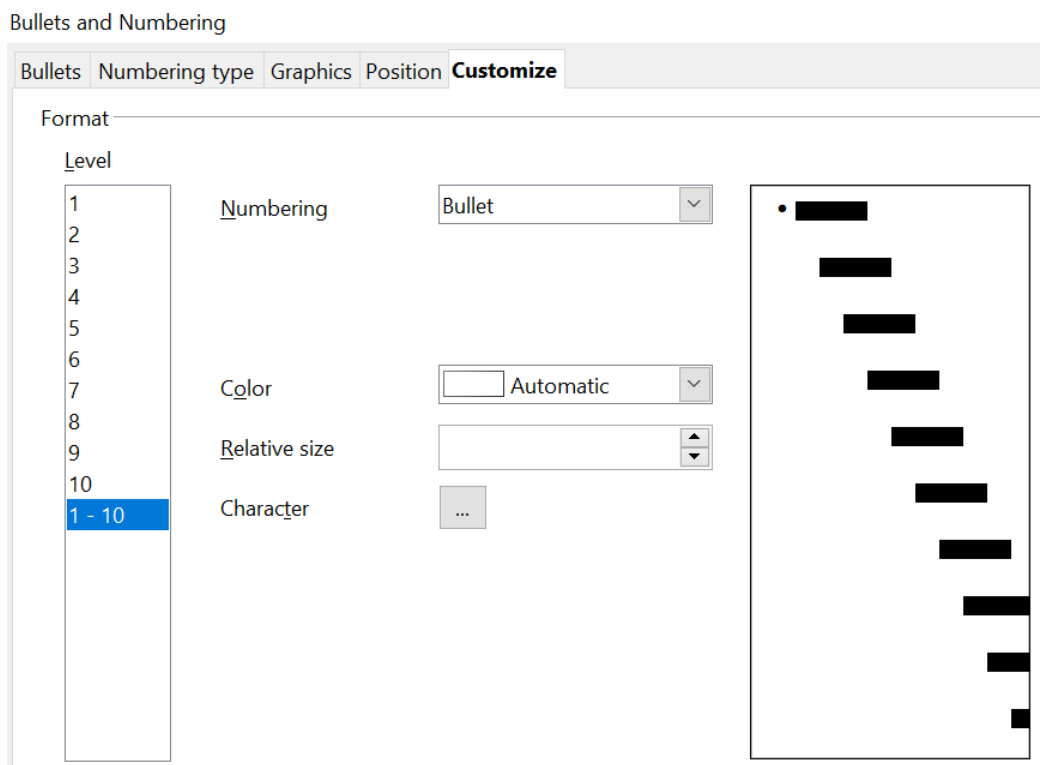


Figure 18: The Customize page for the list outline

The options available on this tab depend on the type of marker selected for the list. Select first the level you want to modify on the left hand side of the box. To modify all

levels at once, select 1 - 10 as the level. Because the levels are arranged in a hierarchical structure, a change to, for example, the font attribute of any level propagates through all the lower levels.

Depending on the numbering style selected in the Numbering box (bullet, graphic, numbering), some of the following options may become available on the tab:

- **Before:** Enter any text to appear before the number (for example, *Step*).
- **After:** Enter any text to appear after the number (for example, a punctuation mark).
- **Color:** Pick the color for the list marker (number or bullet character).
- **Relative size:** Specify the size of the number relative to the size of the characters in the paragraph of the list.
- **Start at:** Enter the first value of the list (for example, you might want the list to start at 4 instead of 1).
- **Character button:** Click this button to select the character for the bullet.
- **Graphics selection button:** Opens a gallery of available graphics or allows the selection of a file on the hard disk to be used as a marker.
- **Width and Height:** Specify the dimensions of the graphic marker.
- **Keep ratio checkbox:** If selected, the ratio between the width and the height of the graphic marker is fixed.

The right hand side of the screen shows a preview of the modifications made. To revert to the default values, click the **Reset** button in the bottom right corner.

Using the Customize tab, you can create complex structured layouts, for example a nested list with numbering followed by bullets, as in Figure 19.

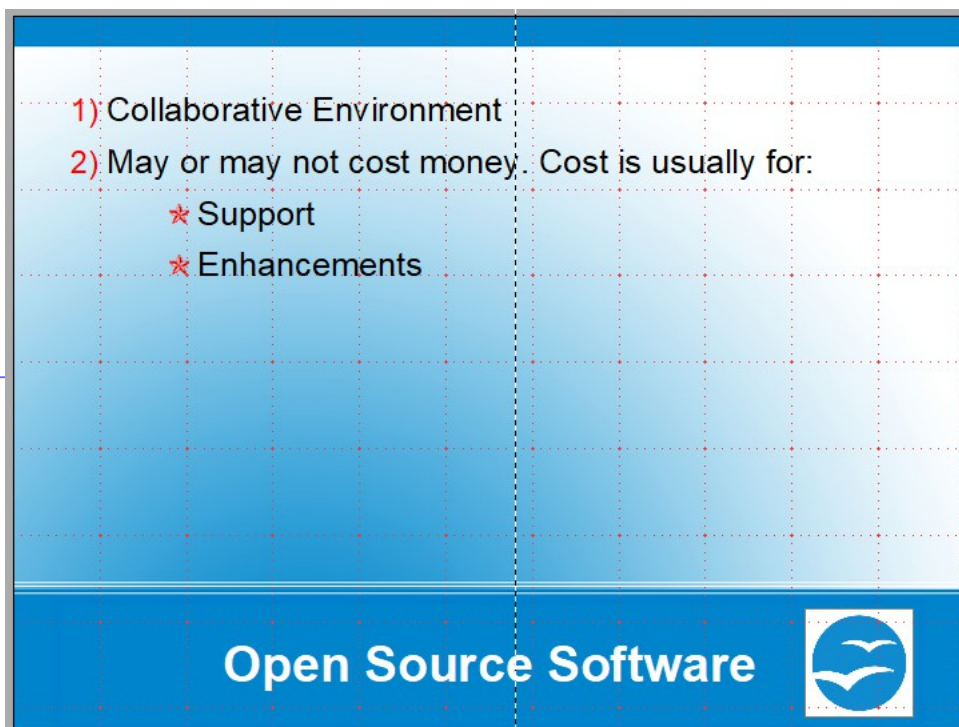


Figure 19: Nested list with mixture of numbers and bullets

Changing the Order or the Outline Level Lines

Click once in a line of text to place the cursor in it, then click on the Outline tab (to the right of the Normal tab) in the Workspace and use the **Promote/Demote** buttons in the Text Formatting toolbar to move the text to the appropriate position and give it the appropriate outline level.



The button with the arrow pointing left promotes the list entry by one level (for example from Outline 3 to Outline 2), the right arrow button demotes the list entry by one level, the up and down arrow buttons move the list entry. Numbering adjusts automatically.

Tip You can also use the *Tab* key and *Shift + Tab* keys to promote and demote the outline level of a line in a list.

Using Tables

Tables are a powerful mechanism to convey structured information quickly, so they represent an important tool when creating a presentation. You can create tables directly in Impress, so there is no need to embed a Calc spreadsheet or a Writer text table. But be aware that in some circumstances it makes sense to do so—the functionality provided by a Calc spreadsheet is far superior to that provided by an Impress table.

Many predefined table designs are available in the Table Design panel of the Sidebar's Properties deck when a table is selected. Figure 20 shows the Properties deck when a table is selected and with the Text and Paragraph panels collapsed

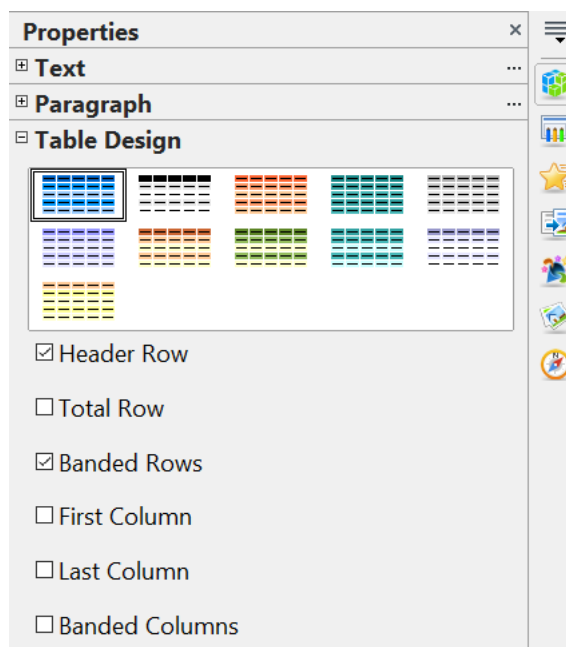


Figure 20: The Table Design task pane

Creating a Table

When working with tables, it is useful to know the number of rows and columns needed as well as the look and feel. These parameters can be adjusted later, but it's more laborious than setting the correct table dimensions from the beginning.

To insert a table, proceed as follows:

- 1) Position the slide which will contain the table in the work area. It is most convenient if the slide has an AutoLayout box dedicated to the table. If the slide is blank, simply select a layout from the *Properties* deck of the Sidebar that has the right number of AutoLayout boxes for the planned slide content.
- 2) If necessary, set the Sidebar to the Properties deck.
- 3) You can either click the *Insert Table* icon in the AutoLayout box or select the menu **Insert > Table**. A box will appear where you can choose the number of columns and rows in the table. Make your choices then click OK to finish inserting the table.
- 4) You can apply any of the table designs displayed in the Sidebar by clicking on the design's icon.

If you inserted the table from the Insert menu it is placed initially at the center of the slide, but you can move it by selecting it and then dragging it to the new position, or by using the method described in “Position and Size” on page 29.

Modifying a Table

Once the table is added to the slide, you can control its appearance, size, position and so on using a combination of Sidebar options, the Table toolbar, and the Table properties dialog box.

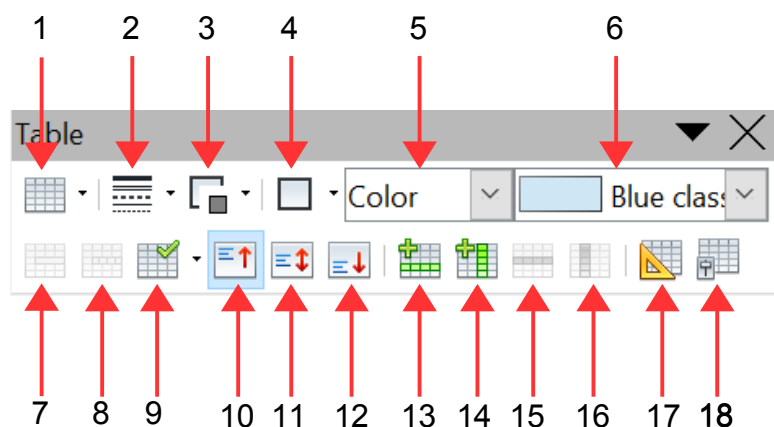
Sidebar Options

The following options are available in the Table Design panel of the Sidebar:

- *Header Row*: selected by default, it adds a first row with a different background from the rest of the table.
- *Total Row*: the opposite of Header row; if selected, it changes the background of the last row to make it stand out from the other rows.
- *Banded Rows*: selected by default, this option colors alternate rows with different backgrounds making it easier to read data presented in rows.
- *First Column*: highlights the first column of the table by allocating a darker background to it.
- *Last Column*: does the same to the last column.
- *Banded Columns*: when selected, alternate columns are colored differently.

Table Toolbar

When a table is selected, 8 blue square handles appear around the edges, and the Table toolbar should be displayed. If necessary, you can open the toolbar using **View > Toolbars > Table**. By default the toolbar will float, but you can dock it at any time to the side or top edge of the work area.



- | | | |
|------------------------------|----------------------------|----------------------------|
| 1 Create Table | 7 Merge Cells | 13 Insert Row |
| 2 Line Style | 8 Split Cells | 14 Insert Column |
| 3 Line Color (border) | 9 Optimize | 15 Delete Row |
| 4 Borders | 10 Top alignment | 16 Delete Column |
| 5 Area style filling | 11 Center alignment | 17 Table design |
| 6 Available fillings | 12 Bottom alignment | 18 Table properties |

Figure 21: The Table Toolbar

The Table toolbar contains the majority of the tools you need to manipulate a table; these are described below.

Table

Use to create a new table on the selected slide. Opens the Insert Table dialog box where you can select the desired number of rows and columns. Click on the small black triangle next to the button to open the graphic tool for inserting a table. To use the tool, move the mouse to the right and down in the grid until you reach the cell you want to be the last and click there.

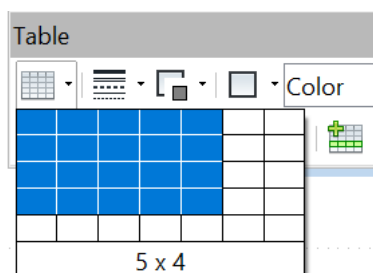


Figure 22: Creating a 5x4 table with the graphic tool

Note

Any newly inserted table is given a set of default attributes such as color scheme, banded rows, header row and so on. Currently such defaults are hard coded in AOO and cannot be changed.

Line Style

Use to change the style of the border line of the selected cells. Opens a new dialog box where you can choose from a range of predefined styles.

Line Color

Open a color selection dialog box where you can choose the color of the border lines around the selected cells.

Borders

Use to select among some predefined border configurations. The borders are applied to the selected cells. If the desired border pattern is not available, you will need to use the Table properties dialog box.

Area filling

In the drop-down menu, first choose how the selected cells should be filled: Invisible, Color, Gradient, Hatching, or Bitmap. Depending on the selection, the Available Fillings drop-down menu is populated with the available schemes. Refer to Chapter 6 (Formatting Graphic Objects) for details on how to manage area filling styles.

Merge cells

Merges the selected cells. Note that the contents of the merged cells are also merged.

Split cells

The opposite operation of Merge cells. Make sure that the cursor is positioned on the cell you want to split, then click to open the Split Cells dialog box.

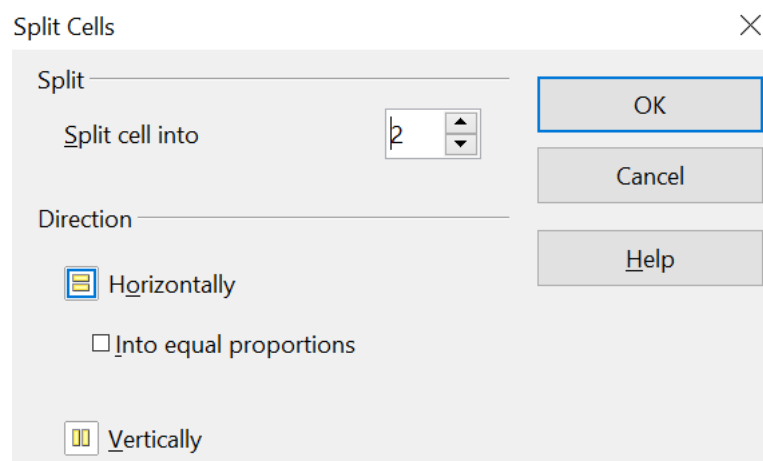


Figure 23: Split cell dialog box

Select the number of resulting cells from the split as well as whether the cell should be split horizontally or vertically. When splitting horizontally, you can select the “into equal proportions” option to get all cells of equal size. The contents of the split cell are kept in the original cell (the one on the left or the top).

Optimize

Evenly distributes the selected cells either horizontally or vertically. If you want to optimize the whole table, you can evenly distribute rows or columns by right-clicking on the table edge and selecting **Row > Space Equally** or **Column > Space Equally** from the pop-up menu.

Vertical Alignment

You can select the vertical alignment of the text on a cell by cell basis between Top, Center and Bottom. The chosen setting only applies to the selected cells. The alignment commands can be applied to all the cells of the table by right-clicking on the edge of the table, choosing **Cell** from the pop-up menu, and then choosing the required alignment.

Insert or delete rows and columns

Use the Table toolbar to insert or delete rows and columns of your table. Rows and columns are inserted below and to the right of the selected cell. You can insert rows and columns at the end of the table using the pop up menu that opens by right clicking on the edge of the table. The insert commands are under the **Row** or under the **Column** menu.

Table Design

The only purpose of this button is to open the Properties deck in the Sidebar.

Table Properties

Click the Table Properties icon to open the Format Cells dialog box, which contains the following tabs:

- *Font*: see “Font Tab” on page 13 for a description of the available options.
- *Font Effects*: see “Font Effects Tab” on page 14 for a description of the available options.

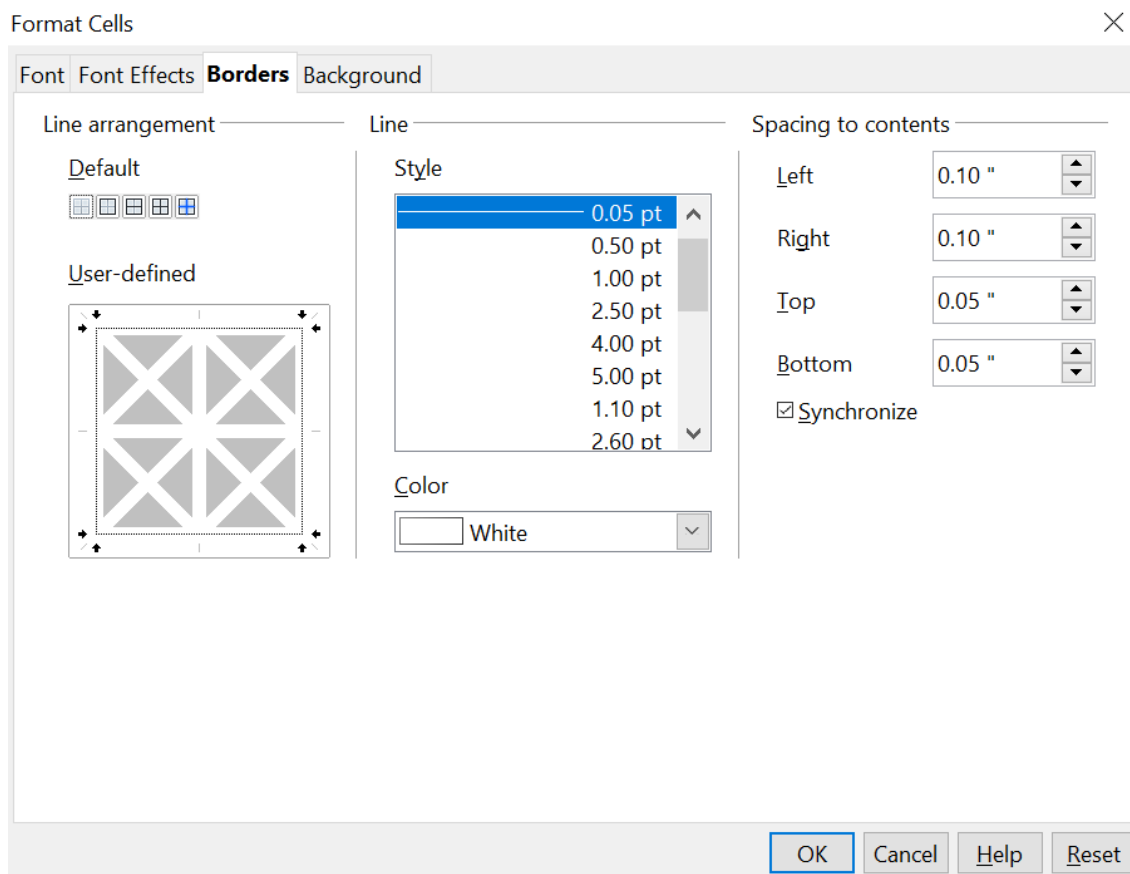


Figure 24: The Format Cells dialog box showing the Borders tab

- *Borders*: here you can set advanced properties not available from the Table Toolbar, such as the spacing between the text and the border as well as setting the style of each individual border of the table separately. This tab also provides the same options as the line style and line color buttons of the Table Toolbar.

Note

It is currently not possible to define diagonal borders for Impress tables.

- *Background*: changes the background of the selected cells and provides the same functionality as the Area Style Filling and Available Filling drop down menus of the Table Toolbar.

Note The Table Properties dialog box can also be accessed from the pop-up menu that opens when right-clicking on the table.

Position and Size

Impress treats tables just like any other graphic object; it is therefore possible to change their position on the slide as well as their size by using the mouse or, for more accurate control, with the Position and size dialog box. You can open the dialog box by pressing *F4* when the table is selected or by right-clicking on the table and then selecting **Position and Size** from the pop-up menu. The functions provided in this dialog are described in Chapter 6 (Formatting Graphic Objects).

Note Unlike other graphic objects, tables cannot be rotated.

Deleting a Table

To delete a table, select it and then press the *Delete* key on the keyboard.

Using Fields

Fields allow the automatic insertion of text into the slide. You can think of a field as a kind of formula which is calculated when the document is loaded or printed, and the result is written to the document. Fields are commonly used when creating templates and slide masters, as explained in Chapter 2. Examples of fields include: date/time, slide number, file name and author.

Inserting a Field

To insert a field into a slide, move the cursor where the field will be and then select from the menu bar **Insert > Fields** followed by one of these choices:

- **Date (fixed)**: inserts the date at the time of inserting the field.
- **Date (variable)**: The field is updated to contain the date at the time of opening the file.
- **Time (fixed)**: a field displaying the time of insertion.
- **Time (Variable)**: a field which is updated to the time of opening the file.
- **Author**: The author of the presentation. This information is derived from the value recorded in the general options. To modify this information go to **Tools > Options > OpenOffice** section then select **User Data**.
- **Page number**: inserts the page number of the slide.
- **File name**: a field with the name of the file.

By default, fields are displayed with a gray background when you are in edit mode.

Customizing Fields

The appearance of all the fields, excluding the page number field, can be customized from the corresponding field editor. To access the field editor (Figure 25):

- 1) Move the cursor to the field and select it. This may be easier using the arrow keys than with the mouse.
- 2) Select **Edit > Fields** from the menu bar.
- 3) Select the desired format in the dialog box that appears.
- 4) Click **OK** when satisfied.

Tip

A similar list of format choices can be accessed by selecting the field and right-clicking.

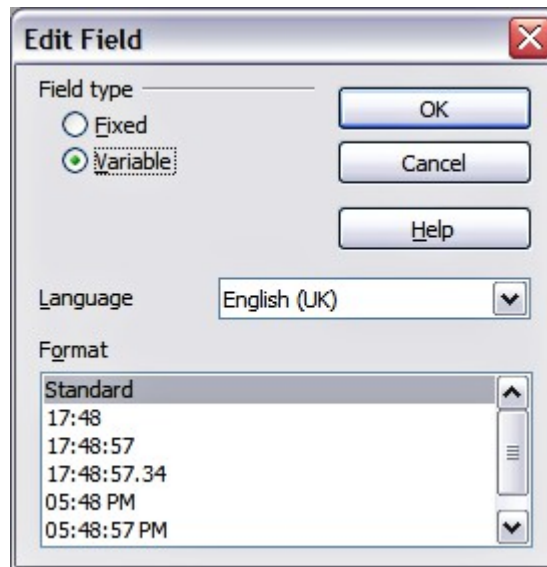


Figure 25: Setting the Time format for a time field

Modifications to the page number fields can be done in two different ways:

- Select the field and apply the formatting manually.
- Switch to the slide master editing mode (**View > Master > Slide Master**), then modify the Background object style as desired. Once back in Normal view, insert the page numbers from the **Insert > Page Number** box. See Chapter 2 for more information about editing a slide master.

Using Hyperlinks

When inserting text (such as a website address or URL) that can be used as a hyperlink, Impress formats it automatically, creating the hyperlink and applying a color and underlining. If you do not want Impress to do that, select **Edit > Undo Insert** from the menu bar or press *Control+Z* immediately after the formatting has been applied.

You can also insert hyperlinks manually.

To prevent AOO from automatically turning website addresses (URLs) into hyperlinks, go to **Tools > AutoCorrect > Options** and deselect the **URL Recognition** checkbox.

Tips

To change the color of hyperlinks, go to **Tools > Options > OpenOffice > Appearance**, scroll to *Unvisited links* and/or *Visited links*, select the checkboxes, pick the new colors and click **OK**.
Caution: this will change the color for all hyperlinks in all components of OpenOffice—this may not be what you want.

To insert a hyperlink, or to customize the appearance of a hyperlink, select **Insert > Hyperlink** from the menu bar. The dialog box shown in Figure 26 opens.

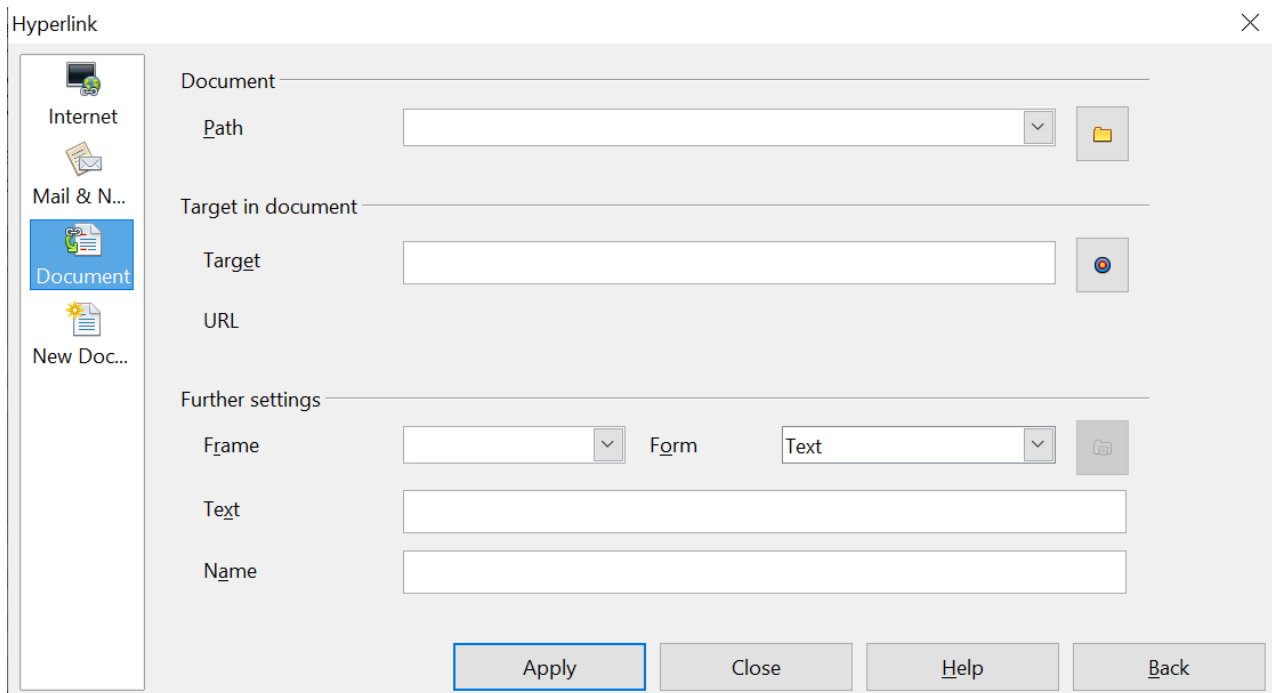


Figure 26: Dialog box to edit hyperlinks

On the left hand side, select one of the four types of hyperlinks:

- **Internet:** a web address, normally starting with `https://`
- **Mail & News:** for example an email address.
- **Document:** the hyperlink points to another document or to another place, commonly referred to as a bookmark, in the presentation.
- **New document:** the hyperlink creates a new document.

The top right part of the dialog box changes according to the choice made for the hyperlink type. A full description of all the choices, and their interactions, is beyond the scope of this chapter. Here is a summary of the most common choices used in presentations:

- For an *Internet* type hyperlink, choose the type of hyperlink (choose between Web, FTP or Telnet), and enter the required web address (URL).
- For a *Mail and News* type hyperlink, specify whether it is a mail or news link, the receiver address and for email, also the subject.
- For a *Document* type hyperlink, specify the document path (the **Open File** button opens a file browser); leave this blank if you want to link to a target in

the same presentation. Optionally, you can specify the target in the document (for example a specific slide). Click on the **Target** icon to open the Navigator where you can select the target, or if you know the name of the target, you can type it into the box.

Note

For navigation within a presentation it is generally better to use the object interaction menu. That item is located in either the Drawing toolbar, or in the pop-up menu that opens when right clicking an object.

- For a *New Document* type hyperlink, specify whether to edit the newly created document immediately or just create it (**Edit later**) and the type of document to create (text, spreadsheet, etc.). For a presentation, **Edit now** is the more likely choice. The **Select path** button opens a directory picker.

The *Further settings* section in the bottom right part of the dialog box is common to all the hyperlink types, although some choices are more relevant to some types of links.

- Set the value of **Frame** to determine how the hyperlink will open. This applies to documents that open in a Web browser.
- **Form** specifies if the link is to be presented as text or as a button. See “Working with Hyperlink Buttons” for more information.
- **Text** specifies the text that will be visible to the user.
- **Name** is applicable to HTML documents. It specifies text that will be added as a `NAME` attribute in the HTML code behind the hyperlink.
- **Event** button: this button will be activated to allow AOO to react to events for which the user has written some code (macro). This function is not normally needed in Impress.

Editing Text Hyperlinks

To edit a text hyperlink, select it (by dragging across the text, not clicking on it), then choose **Edit > Hyperlink** from the main menu bar. Make changes as needed and click **Apply** when done. If you need to edit several hyperlinks, you can leave the Hyperlink dialog box open until you have edited them all, but be sure to click **Apply** after each one. When you are finished, click **Close**.

Working with Hyperlink Buttons

A hyperlink button is inserted in the center of the current slide. In most cases, that is not where you want it to appear. To edit the text or size of a hyperlink button, or to move it to another place on the slide, first display the Form Controls toolbar (**View > Toolbars > Form Controls**). Select the **Design Mode On/Off** icon (upper right corner of the toolbar).

Now you can click on the button and drag it to another position, or right-click and select **Control** to open a dialog box where you can change the text on the button, the size of the button, and other properties.

When you have finished editing the button, click the **Design Mode On/Off** icon again to make the button active again. For a detailed description of the button properties and on how to work with Form Controls refer to the Writer Guide.

